

EMBRACE THE SERENITY OF NATURE

 
DENNY PARK HOMES

park - lake - privacy



KIRKLAND, WA

PROJECT PRESENTATION



TOUCH OF NATURE

Located just steps away from O.O. Denny Park, one of Kirkland's most beloved parks, you'll have access to miles of trails, a pristine lake, and beautiful views of the forests around. You will be surrounded by the breathtaking natural beauty that makes Kirkland such a special place to live, whether you're taking a leisurely stroll along the park's winding pathways, enjoying a picnic with family and friends, or taking a refreshing swim in the lake.



MILLION DOLLAR VIEWS

Denny Park Homes is an exclusive residential complex consisting of **only 8 homes, each offering stunning views of the beautiful lake.** Denny Park Homes offer a unique and special living environment that is difficult to find in today's busy real estate market because of its limited availability. The small number of homes in the complex ensures that **each resident enjoys a sense of privacy** and exclusivity that is hard to find in larger residential communities. Come experience the exclusivity and natural beauty of life at Denny Park Homes and become one of the lucky few to call this stunning community home.



COMPLEX TERRITORY



LOT 4

7112 NE 119TH, KIRKLAND, WA 98034

STARTS FROM:
\$ 3,990,000

 **4**  **3.5**  **4,470 sq.ft.**

Lot size - 7,740 sq.ft.

1 floor | **780 sq.ft** Garage area - **480 sq.ft.**

2 floor | **1,700 sq.ft** Uncovered decks - **610 sq.ft.**

3 floor | **1,990 sq.ft** Rooftop deck - **350 sq.ft.**



1 floor



2 floor



3 floor



LOT 5

7116 NE 119TH, KIRKLAND, WA 98034

PRICE:
TBD

 **4**  **3.5**  **4,470 sq.ft.**

Lot size - 7,120 sq.ft.

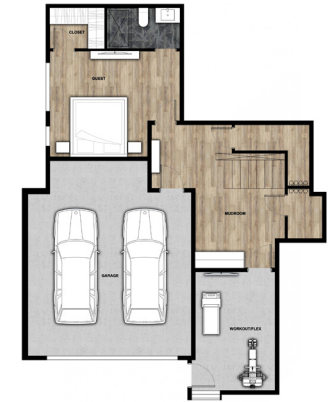
1 floor | **950 sq.ft.** Garage area - **480 sq.ft.**

2 floor | **1,530 sq.ft.** Uncovered decks - **460 sq.ft.**

3 floor | **1,670 sq.ft.** Rooftop deck - **350 sq.ft.**



1 floor



2 floor



3 floor





LOT 6

PRICE:
TBD

7124 NE 119TH, KIRKLAND, WA 98034

 **4**  **3.5**  **4,470 sq.ft.**

Lot size - 6,600 sq.ft.

- 1** floor | **1,070 sq.ft.** Garage area - **550 sq.ft.**
- 2** floor | **1,700 sq.ft.** Uncovered decks - **310 sq.ft.**
- 3** floor | **1,600 sq.ft.** Rooftop deck - **460 sq.ft.**



1 floor



2 floor



3 floor



LOT 7

7128 NE 119TH, KIRKLAND, WA 98034

STARTS FROM:
\$ 3,880,000

 **4**  **3.5**  **4,470 sq.ft.**

Lot size - 6,600 sq.ft.

1 floor | **1,070 sq.ft.** Garage area - **550 sq.ft.**

2 floor | **1,700 sq.ft.** Uncovered decks - **310 sq.ft.**

3 floor | **1,600 sq.ft.** Rooftop deck - **460 sq.ft.**



1 floor



2 floor



3 floor






LOT 8

7128 NE 119TH, KIRKLAND, WA 98034

STARTS FROM:
\$ 4,125,000

 **4**  **3.5**  **4,400 sq.ft.**

Lot size - 6,600 sq.ft.

- 1** floor | **1,100 sq.ft.** Garage area - **180 sq.ft.**
- 2** floor | **1,600 sq.ft.** Uncovered decks - **250 sq.ft.**
- 3** floor | **1,700 sq.ft.** Rooftop deck - **480 sq.ft.**



1 floor



2 floor

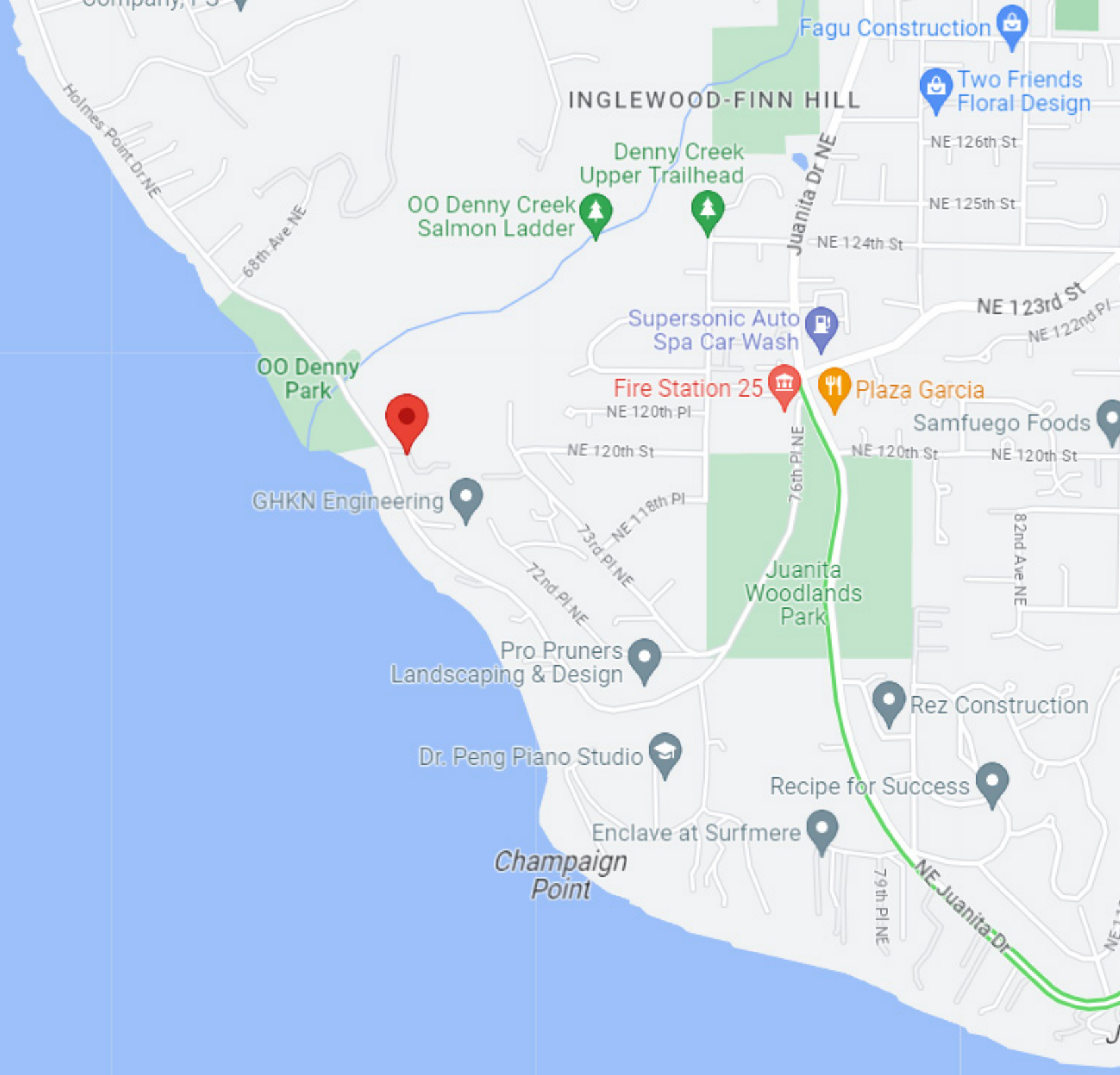


3 floor



LOCATION

KIRKLAND, WA





DEVELOPED BY PAG FINE HOMES

PAG Fine Homes stands out for its superior real estate development representing the highest level of luxury and attention to detail in Residential and Multi Family properties. **Unparalleled quality, high end products, and high expectations are a given as we strive for perfection in all of our projects.** One can notice the touch PAG Fine Homes puts in every project we take on. No detail is overlooked.

We are **inspired by the most sought after designs and latest trends to create attracting facades** brought to life in collaboration with the area's top architects. We make sure our interiors are uniquely and stylishly designed for every market, while making sure they still feel **inviting, warm and homey.** PAG Fine Homes never stops to raise the bar of High End Living.

Our Design and Construction techniques come from **over 70 years of combined experience.** We incorporate the best in **new technologies and evolving techniques.** With many trades owned by partners within PAG Fine Homes **from design and staging to custom cabinetry building and hard surface finishes Installation,** PAG is able to bring the most sophisticated products to the market where competing builders in the area would struggle to make budget for.

PAG Fine Homes is proud and honored to **provide superior quality** for Custom Homes for the modern individual who wants to turn their dreams into something they call home.

pagfinehomes.com

CUSTOM IN OUR HOMES

- **Unique and specific architecture on every project**
- **Fiberglass Windows are a Standard on most of our homes, Aluminum optional**
- **Uniquely incorporated Sought after Board Formed Concrete**
- **Design Fixtures from Restoration Hardware and Shades of Light**
- **Hansgrohe and Kohler Plumbing are standard**
- **Design Landscape Architects and 100% Irrigated Landscaping**
- **Exceed Current Requirement for efficiency and HVAC Systems**
- **Common Tile Areas equipped with heated flooring**
- **LED Lighting throughout**
- **All Custom Cabinetry**
- **Custom designed tile in all baths with built-in shelving**
- **Frameless shower enclosures are standard**



Architecture by MEDICI ARCHITECTS
Leading US architecture company

mediciarchitects.com



Design & facades by AVI
Leading European design & visualization studio

avi-studio.us

ADVANTAGES OF LIVING IN DENNY PARK HOMES

LOCATION

Denny Park Homes is located in a beautiful park area that offers stunning views of the lake from every home. For those who want to get away from the city's bustle and appreciate the area's natural beauty, this serene and peaceful location is ideal.



UNIQUE ARCHITECTURE

The complex features an exclusive architectural design that blends seamlessly into the surrounding landscape. The colors and materials of the facades have been carefully selected to create a harmonious and natural look, minimizing visual noise and enhancing the natural beauty of the area.



PRIVACY

The complex is located on both sides of busy streets, which provides a safe and comfortable living environment for residents and their families. This exclusive and private living environment ensures that only residents and their invited guests have access to the grounds, providing peace of mind and a sense of security.



NEARBY INFRASTRUCTURE

Despite its secluded location, Denny Park Homes is conveniently located near all the necessary infrastructure for a comfortable life. Shops, restaurants, a school, and a hospital are just a short distance away, providing residents with everything they need for a convenient and comfortable lifestyle.



PROFITABLE INVESTMENT

Denny Park Homes real estate is a wise investment since it will continue to grow in value over time. Denny Park Homes offer a one-of-a-kind living experience that will increase in value over time thanks to its breathtaking environment, unique design, and luxurious living space.



ADDITIONAL SERVICE

EASY MOVE

Our team of experts will work with you to create a customized design plan that reflects your personal style and preferences. We'll select everything you need for your future comfortable stay, including furniture, decor, and home accessories, and make sure that everything is delivered and installed in your new home before you move in.



At Denny Park Homes, we believe that simple living is the best kind of living. Our neighborhood provides a calm and serene atmosphere that is ideal for anyone who wants to take in the beauty of nature without giving up comfort and convenience.

**PLEASE CONTACT US AT
ANY TIME**



dennyparkhomes.com

Edward Ambartsumyan
Broker

(206) 227 7359 Cell

eddieva747@gmail.com



LAKEVIEW AT DENNY PARK

DENNY PARK HOMES

2023